

TATES

020 7602 6020



Avonmore Road, London W14 8RS

£485,000

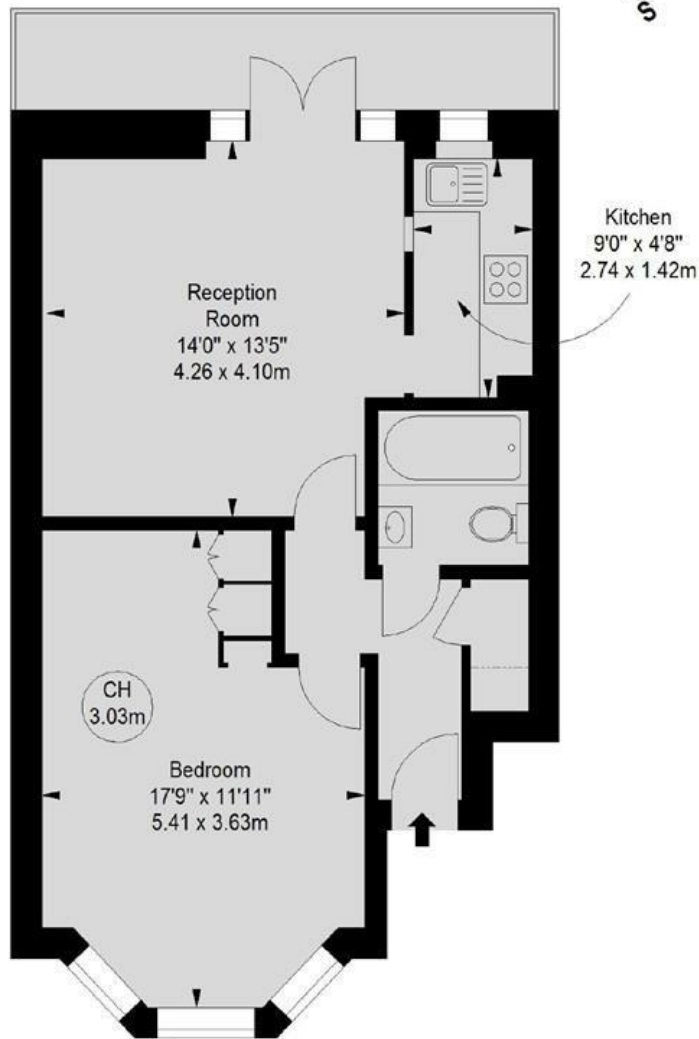
- One Double Bedroom Flat
- Lovely Modern Tiled Bathroom
- High Ceilings
- Moments From Kensington Olympia
- Fully Integrated Kitchen
- Balcony Large
- Close To District & Piccadilly line tubes
- Share Of Freehold

Avonmore Road, W14

Approximate gross internal area

505 sq ft / 46.9 sq m

Key :
CH - Ceiling Height



Raised Ground Floor

Illustration For Identification Purposes Only. Not To Scale
*Floorplan Drawn According To RICS Guidelines

Whilst these particulars are produced in good faith and are believed to be correct, no guarantee is given, nor any responsibility accepted, by Tates nor by any of its representatives, for their accuracy. The particulars do not constitute part of any offer or contract, and it is recommended that such things as measurements, condition, structure, services, appliances, fixtures and fittings and facilities are all independently assessed by the prospective purchaser or renter of the subject property prior to committing to any contract.

Energy Efficiency Rating		
	Current	Potential
Very energy efficient - lower running costs		
(92 plus) A		
(81-91) B		
(69-80) C		
(55-68) D	67	79
(39-54) E		
(21-38) F		
(1-20) G		
Not energy efficient - higher running costs		
England & Wales	EU Directive 2002/91/EC	

135 Hammersmith Road, West Kensington, London W14 0QL

mail@tatesestates.co.uk

tatesestates.co.uk

Tates (Agents) Ltd. Registered in England and Wales No. 02356337
Registered Office: Imperial House, 8 Keane Street, London WC2B 4AS

